



Isle Royale Info – Base Camp

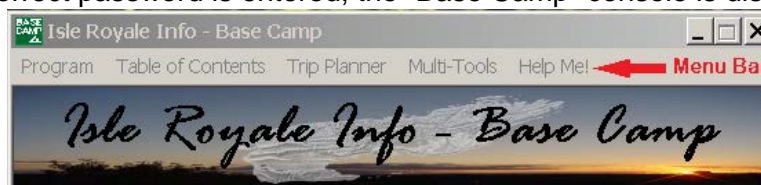
User's Manual

Last Updated: 6/19/2013

About This Program

This program provides an interface to the book “Isle Royale Info – A Comprehensive Guide to Isle Royale National Park”. It will load chapters of the book, provide updates, and optionally, upgrades based on the package purchased.

When initially started, you will see a “splash” screen with a logo for 10 seconds unless you click somewhere in it. After that time, or after you click in it, you are prompted for your password. You received a “default” password that was displayed when you installed the program. This can and should be changed to something easy to remember for you to use. How to change the password is detailed below. Once the correct password is entered, the “Base Camp” console is displayed as shown below.



The Menu Bar Overview

The menu bar at the top of the main screen provides the interface to the documents and tools associated with the program. This is a quick description of the items. A more detailed description is provided further in this document.

Program

Left-click on “Program” and a drop-down menu will appear with three choices having to do with the program.

- “Pack Up (Close All Open Chapters)” will close all open chapters (including this one) while leaving the program open.
- “Take The Tent Down (Close Base Camp)” closes just the base camp program.
- “Go Back Home (Close Everything)” will close all open documents and the program.

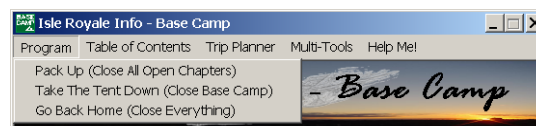


Table of Contents

Left-click on “Table of Contents” and a drop-down menu will appear with all of the available chapters and the complete document. Select any one of them and it will open up in your default PDF viewer program. You can have multiple chapters open at the same time.

Trip Planner

Left-click on “Trip Planner” and the program will open in a new window. The Trip Planner is a separate program and provides a map of the island with details on trails, campgrounds, points of interest and other items. There is a separate User’s Manual available in that program with details on its operation.

Multi-Tools

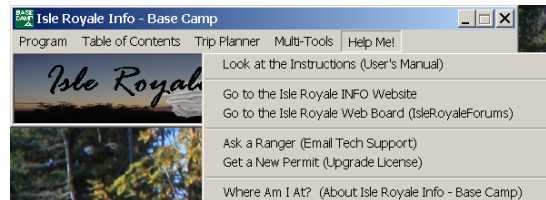
Left-click on “Multi-Tools” and a drop-down menu will appear with these choices having to do with program updates and setup.



- “New Equipment (Check for Program Updates)” will go online and see if there is an update for the “Base Camp”, “Trip Planner” or “Uninstall” programs available.
- “Check the Weather (Check for Chapter Updates)” will open a new window and get the dates of all of your chapters, then go online to see what the latest versions are.
- “Go Backcountry (Change Your Password)” will open up a new window that will allow you to select your own personal password.
- “Move Base Camp (Save the Console Location)” will open up a new window that allows you to save the current location of the program console window.

Help Me!

Left-click on “Help” and a drop-down menu will appear with the following items:



- “Look at the Instructions (User’s Manual)” will open this document in a new window.
- “Go to the Isle Royale INFO Website” will open your default browser and go to the website.
- “Go to the Isle Royale Web Board (IsleRoyaleForums)” will open your default browser and go to Isle Royale Web Board website.
- “Ask a Ranger (Email Tech Support)” will open up a window in your browser and allow you to send a problem report, suggestions or comments about the program directly to us. You can also register your package if you purchased a “retail” version.
- “Get a New Permit (Upgrade License)” will open a new window and allow you to enter a new license number if you upgraded the program.
- “Where Am I At? (About Isle Royale Info - Base Camp)” will open a new window with information on the program and license.

The Program

Why the Program?

The program itself is simply a way to access the individual book chapters and provide an easy way to update the chapters with the latest information, as it becomes available. This was needed as the book increased in size and scope. I am typically taking two trips to the island every year. Each time I take a trip, the book gets updated in some way. Also, every spring it gets updated with the latest rates and dates for the upcoming season. These changes, along with adding and changing things all the time, makes it very hard to put together a complete document for release. Thus, it has only been

released once each year. And, when it was released, I had to send updates to everyone who has purchased the book with “lifetime” updates. This number is growing weekly and is a large amount of work. It was also somewhat complicated for the user to update things. With this new format, the book can be updated all the time and you can always get the latest chapter version as soon as it is ready. The program will also take care of the updating and make sure everything is put in the right place. The other benefit this provides is that I can offer a “demo” for people to try before buying it. A secondary benefit to having the program, which may end up being just as important, is it allows the document to become more than just pages. The first incarnation of this is the “Trip Planner” included in the package. This program provides a map for quick reference of Trails, Portages, Campgrounds and Points of Interest on the island. It is meant to be an aid in planning and learning about the island. It can be opened and referenced as you are going through the document “Isle Royale Info – A Comprehensive Guide to Isle Royale National Park”. It is packaged and installed as part of the “Isle Royale Info – Base Camp” program. It has its own user’s manual with details on its operation available in the program.

It is not necessary to run the program to read the chapters. Each chapter is a PDF file that can be opened independently. The program is only needed to get updates and for the initial installation. The complete document is still included, but it will most likely only be updated once a year and it does not include links to pictures and charts. This gives you one document you can read and export to an “EBook” if you wish.

Starting the Program

When the program was installed, it created a listing under your Start -> All Programs -> Isle Royale Info. This directory contains “Isle Royale Info – Base Camp”, “Isle Royale Info – Trip Planner” and “Isle Royale Info – Uninstall”. You were also prompted if you wanted to make shortcut on your desktop.



Program Testing and Required Software

The program was written in the Microsoft Windows™7 environment and should be compatible with any version greater than Windows™98. It has not been tested in the Macbook™ environment, but is in the process. My understanding is there is a Windows™ shell available.

The PDF documents have been tested with Adobe Reader™7-11, Adobe Acrobat™9-10 and Nuance PDF™7. There are other PDF reading programs out there. As long as they say they are compatible with Adobe Reader™4 or greater, they should work.

If you find any problems, please let us know. You can email us at: support@isleroyale.info. Or, the best way, is to send an email through the program under “Help”.

To Uninstall the Program

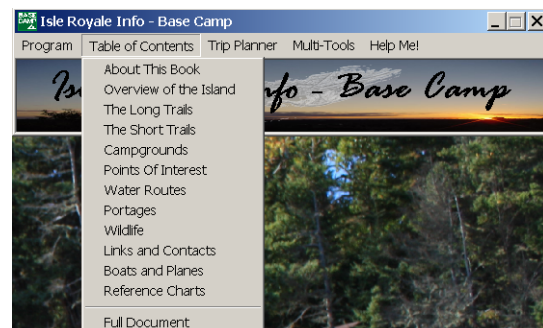
There is an uninstall program that will completely remove the program and it’s components from your system. Once removed, it will need to be fully re-installed again. The only thing you will have to remove is the directory “Isle Royale Info” once the program is removed.

Table of Contents (The Chapters)

When you click on “Table of Contents” a drop-down menu will appear with all of the available chapters as described below.

Location

Every chapter (section) is a PDF file that resides in its own directory of the same name under the “Isle Royale



Info" directory, except the complete document, which resides directly in the program directory and is called "Isle Royale Information.pdf". The "Base Camp" program is not required to read the chapters as they are regular PDF files that can be opened in your PDF viewer. They can also be uploaded and converted for use with EBook viewers.

Descriptions

About This Book – Details on me, legal stuff, acknowledgements, my trips to the island, how the book is laid out and a park map.

Overview – A general description of the Park. This includes park information, island amenities, drinking water, campfires, hiking, shelters, outhouses, wildlife, park visitation, weather, garbage, bugs, back country camping, fishing and more. Most everything you could want to know about the park infrastructure and what to expect when you get there.

Long Trails – This section of the book provides maps, miles and detailed descriptions of all of the long trails on the island. These are the "main" trails on the island and typically connect points of entry (docks) either directly or via shorter trails. It lists seven long trails and break them down by section with a description for each of the sections. The descriptions include a general overview, show an elevation graph, list key points, provide a detailed description and list relevant campgrounds. There are many pictures taken along the trails with views. Many of trails also show a view via a Google Earth(TM) map.

Short Trails - This section of the book provides maps, miles and detailed descriptions of all of the short trails on the island. These are the trails that typically connect longer trails to campgrounds or points of entry (docks). It lists twenty-two "short" trails and describes each of them with a general overview, show an elevation graph, list key points, provide a detailed description and list relevant campgrounds. There are many pictures taken along the trails with views. Many of trails also show a view via a Google Earth(TM) map.

Campgrounds - This section of the book provides maps, campground layouts, pictures and detailed descriptions of all of the thirty-six campgrounds on the island. These descriptions include descriptions of the individual sites themselves and rate them based on conditions, layout, views and weather. There are pictures of many of the sites along with views from many of the campgrounds. There are "side trips" listed if there are interesting things near the campground and a link to a Google Earth(TM) map if the view is worthwhile.

Points of Interest - This section of the book provides maps, pictures, some histories and detailed descriptions of many of the points of interest on the island. These include mine sites, town sites, physical features, lighthouses and many other locations. It is not a complete listing of everything on the island as that would be a book in itself, but it does provide a description of all of the major ones and many minor ones.

Water Routes – This section of the book provides detailed descriptions of many of the water routes. It includes detailed maps with marked land features as described in the route, a danger rating based on the route and both nautical and statute miles.

Portages - This section of the book provides detailed descriptions along with maps and pictures of all sixteen of the marked portages on the island. This includes a general overview, an elevation graph, key points, a detailed description and list relevant campgrounds. There are many pictures taken along the portages with views and many of them also show a view via a Google Earth(TM) map.

Wildlife - This section of the book provides a general description of some of the wildlife on the island. It is neither scientific nor complete and it is not meant to be. It is only my impressions and interactions with wildlife.

Links and Contacts - This section of the book provides a detailed listing of various contact information for sites and businesses related to the island, the surrounding area and getting there. This includes phone numbers, websites, email, addresses and other information for such things as cities, hotels, transportation, weather, restaurants, outfitters, stores, camping, park information and other things related to going to the island.

Boats and Planes - This section of the book provides details on the boats and planes providing service to the island, along with descriptions, operation dates, routes, times, approximate costs and more.

Reference Charts - This section of the book provides several reference charts. They are in a separate section to make it easy to pull them out of the book, or print them out easily, to take them with you to the island. They include a chart of GPS coordinates, a trail mileage chart, a chart of the long trails, a chart of the short trails, a chart of the campgrounds and a chart of the portages.

Isle Royale Information – This will open the complete document containing all of the above chapters together in one document as of the last major release. This is typically done once a year whereas the individual chapters will be updated more often and will contain the latest information available.

Layout

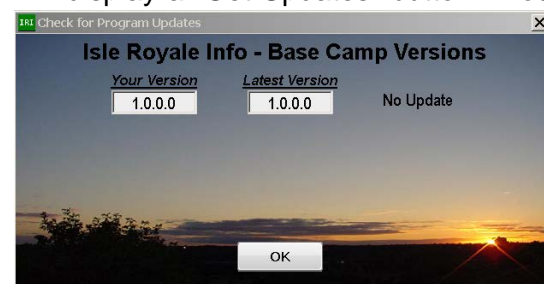
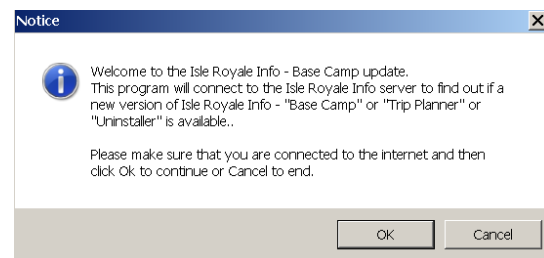
At the beginning of each chapter (section) is a description of what is included in the section. This is typically explaining how I have come up with the details associated. For instance, in the trails chapters, it explains the miles listed and where they are from and the trail difficulty and what it is based on.

Multi-Tools

New Equipment (Check for Program Updates)

Selecting this will begin the process for checking to see if there is an update to the “Base Camp”, the “Trip Planner” or the “Uninstall” programs. You need to have an active internet connection for this to work. The updates are checked separately, and if the “Base Camp” program needs to be updated, it will have to close before installing the update.

Once selected, it will display the version of your “Base Camp” program, then go and get the latest version from the website and display it. If there are no updates available, it will display that message. If there is a newer version available, the program will display a “Get Updates” button. You can click on that button, or cancel and get the update later. Selecting “Get Updates” will start the process of downloading the latest program and the updater utility. Once they are downloaded, the program will prompt you to “Cancel” which will abort the operation or click “Start Now”, which will close the Base Camp program and start the Installer utility. The installer Utility will start and you will be presented with the Windows™ install dialog asking whether



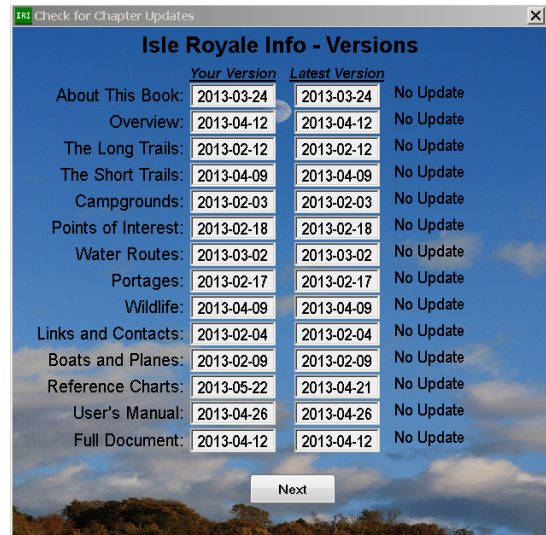
you want to run the program called “IR Base Camp Updater”. Select “Yes” and the installer window will appear. You can then update by clicking on “Update” or abort by clicking “Cancel”. If “Update” is selected, the installed will extract the new files and let you know it was successful. Once done, you can select “Restart Program” to close the installer and restart the Base Camp program, or “Cancel” to just quit the installer. Either way, the program has been updated.

It there is not an update available for the “Base Camp” program, it will check to see if there is an update for the “Trip Planner” program and the “Uninstaller” program. If there is, just click “Install” and it will update.

Check the Weather (Check for Chapter Updates)

Selecting this will open a window displaying all of the chapters of the book and this user’s manual. It will show your versions and check online to see if there is a newer version available. If there is, you will be prompted as to whether you wish to update. If you update, that document will close if open and the updated document will be downloaded.

If your license is “Ultimate”, it will then open a window to check to see if there are picture updates available for each of the chapters and, optionally download them.



Go Backcountry (Change Your Password)

Selecting this you will be prompted to enter a new password for the program. This will override the default password to something you wish. Be careful as this is the only password that will then work with the program and there is no way to reset it without reinstalling the program. Once you enter what you want to change it to, you will be prompted to re-enter it. If they match, you will be prompted once again before it is changed.



Move Base Camp (Save the Console Location)

Selecting this you will be asked if you wish to save the current location of the “Base Camp” console. Before selecting “Save Location”, put the console window where you wish it to be located when you start the program. *Hint: I locate mine at the top right corner of my screen. This allows the chapters to load to the far left and the “Trip Planner” to load below the console.*



Help Me!

Look at the Instructions (User’s Manual)

Opens this document.

Go to the Isle Royale INFO Website

Opens up your default web browser program and goes to www.islroyale.info. The home web site for this program.

Go to the Isle Royale Web Board (Isle Royale Forums)

Opens up your default web browser and goes to isleroyaleforums.org. This is an independent web board on Isle Royale. It is monitored by many people with a wealth of knowledge and a great place to find answers. Program questions SHOULD NOT be asked here. The web board has nothing to do with this program.

Ask a Ranger (Email Tech Support)

This selection opens a screen to send an email to Tech Support. This is the best way to ask questions, send along problems and make suggestions.

If you have purchased a “Retail Package” of the book and program, this is the place you can register the program in your name. Retail Packages show the registered name as the place the package was purchased from. To register the program in your name, go to this selection; fill out your name and email address then, from the drop-down menu under “Please select the product you are writing in regards to”, select “Registration”. Also, fill in your “serial number” which appears at the bottom of the support screen. Send this form in and a new license will be created in your name and will be emailed to you.

Hint: “Email Tech Support” is done through your internet browser; sometimes it will not load the page the first time and may show an error like “http 501 error: The website is unable to display the page”. This is an Internet Explorer error and not a problem with the page or program. If it does not load the first time, close it and try it again.

Get a New Permit (Upgrade License)

This selection will open a window that allows you to enter a new license number. The software can be upgraded from the original package to a higher package by purchasing an upgrade license, or from a “Demo” version to a licensed version. If you upgrade or, purchase a license after installing a “Demo” version, you will receive a new license number via email. You can enter it here to upgrade to your purchased package. *Hint: If your “Demo” version has expired, you will have to run the “Installation” program to install your licensed version.*

Where am I At? (About Isle Royale Info – Base Camp)

This selection will open a window and display information about the program including who it is registered to, the package type, version and serial number.

About Program Packages

The program is available in four different packages. This can be confusing and it would be a lot easier to offer only 2 packages, “Demo” and “Ultimate”, but I offer the different levels to hopefully, meet the needs of all. If someone is only going to the island once, the “Basic” package is fine for them. If someone wants to know all of the details and keep updated on the current state of the island, the

“Lifetime” package is great. For someone into the island and wanting all the detail maps and large pictures, the “Ultimate” is the way to go. Below is a description of the packages and what they do and do not do. It is possible to upgrade a package once it is purchased. Go to the Isle Royale Info website for details.

Demo

The “Demo” version is as it is named, is to give you an idea of what the book and program gives you. It is fully functional except it only uses partial chapters on the book. When updating, it will get only the latest version of the demo release. The links to larger pictures, charts and Google Earth™ pictures are fully functional for the sections that are included. The “Trip Planner” program will only function for 30 days from the date of installation. It will display the same information as all of the other packages, but will not allow you to go to the individual sections and will not allow you to add to your trip.

Basic

The “Basic” package will give you all of the information that was current at the time of your purchase. The program will not “Get Chapter Updates” as they become available. The installer program will get the latest information for up to 30 days from your purchase, but will not update after that. The links to larger pictures, charts and Google Earth™ pictures are only functional for the first few items in each chapter (the items that are displayed for the “Demo” version. The others are not there). The “Trip Planner” is fully functional, but will use information from the date that you purchased the program.

Lifetime

The “Lifetime” package provides all information and updates whenever they become available. The links to larger pictures, charts and Google Earth™ pictures are only functional for the first few items in each chapter (the items that are displayed for the “Demo” version. The others are not there).

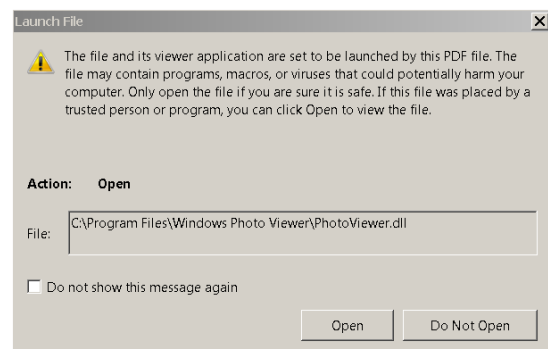
Ultimate

The “Ultimate” package provides everything possible. It has it all! You get the full document with links to full size photos, enlarged detail maps, Google Earth™ pictures and updates of the document, programs, pictures and detail maps when they become available.

Note: When the full document is opened, links to pictures and maps will not work. They will only work in the individual chapters. Also, the trail profiles do not link to larger ones as the ones in the book are quite representative as they are.

Some Hints and Tricks

Loading links to pictures, charts and Google Earth™ pictures: When clicking on a link selecting a picture while in the PDF file, it will load with your default picture viewer. Most Windows systems default to "Windows Picture and Fax Viewer". When it loads the first picture, there should be a checkbox you can check and they will load right away after that.



If you click on a link that opens a PDF file it opens that file and closes the documents you were reading: There is a setting in Adobe that loads documents in the “same window”. This can be changed. In Adobe Reader 10 & Acrobat 10, go to EDIT > PREFERENCES > GENERAL and uncheck "open cross document in same window"

When opening a picture of some type and it cannot open the picture or it does not open in the program you want (I use "Windows Picture & Fax viewer): In Windows 7 & XP, go to START > DEFAULT PROGRAMS > "Associate A File type or Protocol with a Program". You can then select the file extension that is a problem and pick the program you want to open it.

When selecting a picture Adobe gives you a warning about not trusting sites and "do you wish to open?": In Adobe Acrobat 10, there is a check box. Once you check it the program will open the rest of the pictures without prompting. In Adobe Reader 10, there is no check box and it prompts you every time. I have not found a way around this. Please, let us know if you find a solution.

Windows Vista and Later User Account Controls (UAC): You may see a "Shield" on your program and shortcuts. This indicates that the program will run only when the user gives approval. This was developed to prevent unauthorized programs to run on their own in newer versions of Windows™. This depends on the level setup in "User Account Settings". If this is the case, when you run the program, you will see a window on startup that says "Do you want to allow the following program from an unknown publisher to make changes to this computer?". It then lists the program name (IRsomething.exe) and says "Publisher: unknown". Simply select "Yes" and allow the program to run. In order to get registered as a publisher there is a process you have to go through and it costs money. I investigated this and determined it was not worth all the money to become registered at this time.

Norton Antivirus: If you use Norton (Symantec), the programs may get flagged as programs you should not run. If you look at the message, this is due to the program being new and not having many users. To disable this, right click on the program and select "Norton File Insight". You will see a screen listing the reasons why and a selection called "Trust Now". This will allow the program to run. As the program is finalized and has created a "history" this will go away. The message will look similar to this:

"Norton has detected this program has WS.Reputation.1 virus associated with it.

WS.Reputation.1 is a detection for files that have a low reputation score based on analyzing data from Symantec's community of users and therefore are likely to be security risks. Detections of this type are based on Symantec's reputation-based security technology. Because this detection is based on a reputation score, it does not represent a specific class of threat like adware or spyware, but instead applies to all threat categories. The reputation-based system uses "the wisdom of crowds" (Symantec's tens of millions of end users) connected to cloud-based intelligence to compute a reputation score for an application, and in the process identify malicious software in an entirely new way beyond traditional signatures and behavior-based detection techniques."